

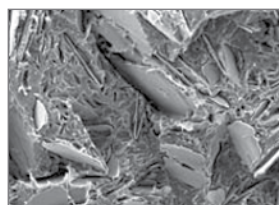
Eastman G™ maleated polyolefins

Superior coupling additives for mica reinforcement

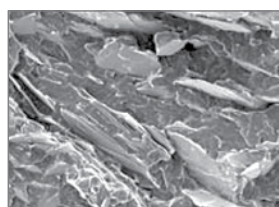
Eastman G-3003 and Eastman G-3015 polymers are maleic anhydride-grafted polypropylenes with a balance of functionality and molecular weight designed to couple fiber and mineral fillers to polypropylene. Evaluations at Eastman laboratories have shown that maleated polypropylenes with higher levels of maleic functionality (>1.2% maleic) are superior coupling additives for mica/PP composites.

Tests have further confirmed that *lower-cost, untreated mica* can be coupled to provide reinforcement properties equal to silane-treated mica. The higher acid number maleated couplers are effective at very low levels (1%–2% based on mica level).

Eastman G-3003 and Eastman G-3015 are available in 50 lb (22.7 kg) bags or 1,000 lb (453.6 kg) boxes. Bulk bag packaging is available on a made-to-order basis.



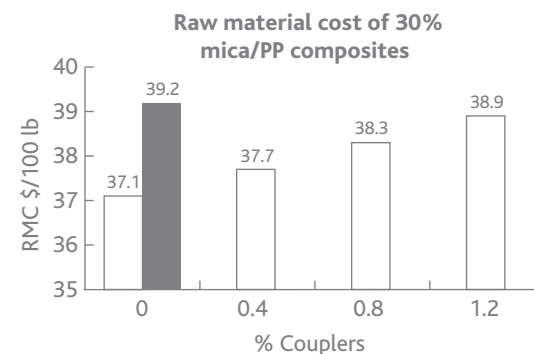
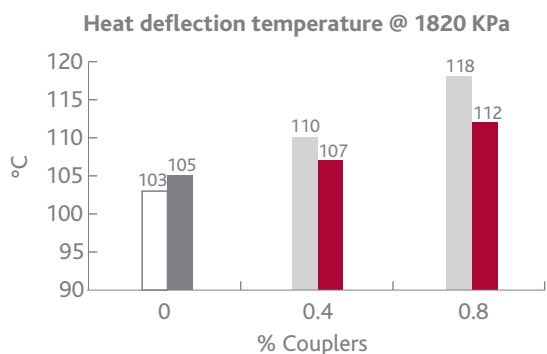
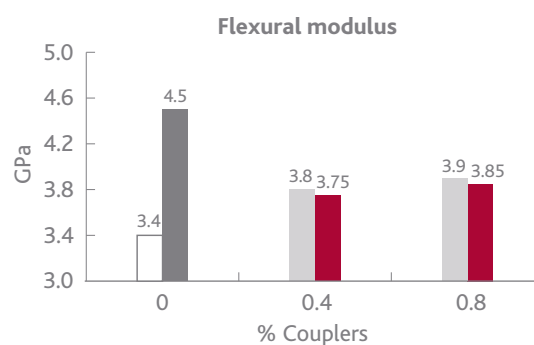
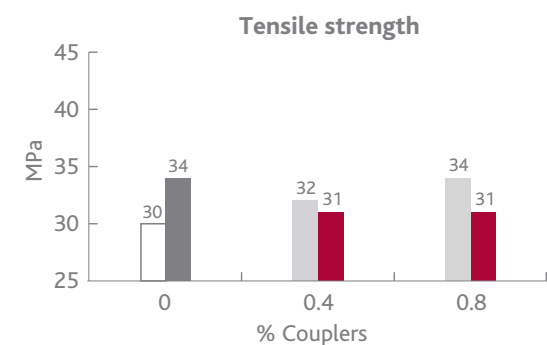
40% mica/PP



40% mica/PP/Eastman G

Eastman G™ polymers are products of Eastman and are protected under one or more of the following U.S. patents: 5,955,547; 6,046,279; 7,408,007; 7,683,134; and their foreign equivalents.

Physical data for 40% mica/PP composites



□ Untreated mica ■ Treated mica ■ Eastman G-3015 ■ Eastman G-3003



Eastman Corporate Headquarters

P.O. Box 431
Kingsport, TN 37662-5280 U.S.A.

U.S.A. and Canada, 800-EASTMAN (800-327-8626)
Other Locations, +(1) 423-229-2000

www.eastman.com/locations

Although the information and recommendations set forth herein are presented in good faith, Eastman Chemical Company ("Eastman") and its subsidiaries make no representations or warranties as to the completeness or accuracy thereof. You must make your own determination of its suitability and completeness for your own use, for the protection of the environment, and for the health and safety of your employees and purchasers of your products. Nothing contained herein is to be construed as a recommendation to use any product, process, equipment, or formulation in conflict with any patent, and we make no representations or warranties, express or implied, that the use thereof will not infringe any patent. NO REPRESENTATIONS OR WARRANTIES, EITHER EXPRESS OR IMPLIED, OF MERCHANTABILITY, FITNESS FOR A PARTICULAR PURPOSE, OR OF ANY OTHER NATURE ARE MADE HEREUNDER WITH RESPECT TO INFORMATION OR THE PRODUCT TO WHICH INFORMATION REFERS AND NOTHING HEREIN WAIVES ANY OF THE SELLER'S CONDITIONS OF SALE.

Safety Data Sheets providing safety precautions that should be observed when handling and storing our products are available online or by request. You should obtain and review available material safety information before handling our products. If any materials mentioned are not our products, appropriate industrial hygiene and other safety precautions recommended by their manufacturers should be observed.

© 2017 Eastman. Eastman brands referenced herein are trademarks of Eastman or one of its subsidiaries or are being used under license. The ® symbol denotes registered trademark status in the U.S.; marks may also be registered internationally. Non-Eastman brands referenced herein are trademarks of their respective owners.